



QPR

Introduction to New Features

Version 2025.1.0

All product names referenced herein are trademarks or registered trademarks of their respective companies. QPR Software Plc. disclaims proprietary interest in the marks and names of others. Although QPR Software Plc. makes every effort to ensure that this information is accurate, QPR Software Plc. will not be liable for any errors or omission of facts contained herein. QPR reserves the right to modify specifications cited in this document without prior notice.

Companies, names, and data used in examples herein are fictitious unless otherwise noted. No part of this document may be reproduced or transmitted in any form or by any means, electronic or manual, for any purpose, without the express written permission of QPR Software Plc.

Copyright © 2003 - 2025 QPR Software Plc. All Rights Reserved.

Table of Contents

1	Summary.....	1
2	Support for QPR BusinessPortal / Web Services Improvements.....	2
2.1	QPR BusinessPortal User Experience Improvements.....	2
	Diagram Viewer Improvements (B-08121, D-14350, B-07868, D-14349).....	2
2.2	QPR BusinessPortal Configurability.....	2
	Relations Browser - Configurable columns (B-07356).....	2
	Details of the Card (B-07881).....	2
	Support for Custom Attributes in Client Configuration (B-08635).....	2
	QPR BusinessPortal Information View for Non-card Elements (Activity Task etc.).....	3
	Support for Client Configuration and Localization (B-08543).....	3
3	QPR ProcessDesigner / EnterpriseArchitect Windows Client.....	4
3.1	QPR ProcessDesigner / EnterpriseArchitect Modeling.....	4
	Possibility to Set the Default Child Diagram Type for Popup Menu Option (B-08119).....	4
	Possibility to Show Note Element on Diagram (B-08300).....	4
	When a Connector is Moved on an Element That Has Hidden Diagram Content Field the Connector's End Element No Longer Changes (D-14307).....	4
	Connectors No Longer Stay Behind the Group Element When Elements Are Grouped.....	4
	Presentation View Improvements (D-14208).....	5
	Better Support for Changing Diagram View Setting (D-14194).....	5
	BPMN 2 Improvements (D-14149).....	5
	Archimate 3.2 Support (B-08572).....	5
	New QPR EA Based Integrated Meta Model 2025.1 Template (B-08572).....	5
	Owner Field Inconsistency Resolved (D-14145).....	6
	QPR ProcessDesigner/EnterpriseArchitect Relation to Subprocess Elements Activates.....	6
	Generic Element's Default Information Item Can Be Set (D-13846).....	6
	QPR ProcessDesigner/EnterpriseArchitect Support Attribute Sets in Diagram View.....	6
	Setting Visibility (B-08636).....	6
	QPR ProcessDesigner/EnterpriseArchitect "Prevent Diagram Opening" Behavior for.....	7
	New Navigator View Supported Relation for Custom Relation Hierarchies (B-08626).....	7
	Use Filter to Create Sample for Navigator View (B-08518).....	7
	Show Relations with From/To Element Type (B-08508).....	8
	Diagram Versioning Improvement - Last Updated Timestamp (B-08466).....	8
	Draw a Bridge / Jump Where Connectors Cross (B-08431).....	10
	New Navigator View Filters Information Item Type (B-08417).....	10
	Navigator View Excel Type Column Filtering (B-08290).....	10
3.2	QPR ProcessDesigner / EnterpriseArchitect API.....	11
3.3	QPR ProcessDesigner / EnterpriseArchitect User Experience.....	11
	Web Style Copy-Paste Information Item Direct Links (D-11305).....	11
	Horizontal Scrollbar for Left Side Hierarchy in Selection Dialogs (B-08503).....	11
	Presentation View to Show Note / Information Item Dialog (B-08475).....	11
	New Grab and Move Tool (B-08473).....	12
	Support Horizontal Scrolling with Touchpad (B-08378).....	12
	Client Diagram View No Longer Jumps to Root Level After Saving (D-14152).....	12
	New default Zoom Sizes for Web Styles (B-05898).....	12
3.4	QPR ProcessDesigner / EnterpriseArchitect Reliability.....	12

4	QPR Portal Improvements	13
4.1	QPR Portal Facelift (B-08586)	13
4.2	Scorecards/Actions Views in Booklets Can Now Be Scrolled Vertically (D-14289)	13
4.3	Do Not Allow Setting an Empty Password in Portal (B-08592)	13
4.4	QPR Portal Navigator View to Show Column Values for Relation Element's From and To (D-14368)	13
4.5	QPR Portal Filtering by Organization Item (D-14193)	13
4.6	Portal Action Last Modified Now Updated When Switching Attachment (D-13941)	13
4.7	Analysis View to Show Attribute Set's Cardinality N Relation Attributes in the Order They Have Been Created in Client (B-08525)	14
4.8	Hide the "No Access" Text From Analysis view (B-08524)	14
4.9	Portal Support For Published Client Navigator View Customized Column Names (B-08500)	14
4.10	Copy Link Button to Copy Link Directly to Clipboard (B-08474)	14
4.11	Popup Selection List for Information Items, External Models etc. (B-08436)	14
4.12	Metrics Link Traffic Lights Support for BPMN Models (D-11509)	15
4.13	Default Value Now Works for Users Custom Attribute Type (D-14075)	15
5	QPR Web Services Server	16
5.1	Resources Now Work Correctly for Organization Items (D-14375)	16
5.2	Web Services Server No Longer Occasionally Crashes When Logging Off Expired Session (D-13224)	16
5.3	Web Services Server No Longer Freezes at Startup if QPR_Servers.ini Has Special Characters (D-13935)	16
5.4	QPR Foundation Server No Longer Crashes When Trying to Create/Modify User/Group with Long Attribute Values (D-13414)	16
5.5	Web Services Attribute Userswithaccess Performance Improvement (D-13298)	16
5.6	Web Services No Longer Crashes When Sorting Query Result with Value (D-13953)	17
5.7	Web Services Support for Connector Target Elements (B-08605)	17
5.8	Attribute to Web Service API for Getting EA Object Behaviors (B-07911)	17
5.9	Createobject Now Allows Creating Metrics Elements with Names Longer Than 100 Characters (D-13947)	17
5.10	UserId and DirectObjectRightsOnly Parameters to Web Service Accesslevel Attribute (B-07852)	17
5.11	MatchEndingOrEndedPeriod Parameter to Web Service API (B-08030)	17
5.12	Calculation Can Now Be Triggered When Formula Is Changed From Web Service API (D-12950)	18

5.13	Web Service API Support for Period References Lastforseries and Firstforseries (B-07686).....	18
6	QPR Metrics.....	19
6.1	QPR Metrics Custom Attributes (B-08364).....	19
6.2	Model Merge No Longer Creates Default Formulas Containing One Space Character (D-14255).....	19
6.3	Dashboard Symbol Layout Period Settings Are No Longer Broken After Model Merge (D-14164).....	19
6.4	Selecting an Empty Value Setting for an Element No Longer Crashes Metrics Server (D-14199).....	19
6.5	Valid Formulas Are No Longer Set as Invalid (D-12918).....	19
6.6	Metrics Server No Longer Crashes When Setting Certain Attributes (D-12753).....	20
6.7	Explicit None Rights Given via a Group Can Now Override Other Object rights (D-12718).....	20
6.8	Metrics Element Description Maximum Size Increased (B-08479).....	20
6.9	Next Period's Value Is No Longer Put Into Current Period When Next Period Doesn't Exist for Measure (D-14111).....	20
6.10	API and SQL Import Now Accept Measure Values With Unit's Decimal Symbol (D-14098).....	20
6.11	QPR Metrics API.....	20
7	Other Improvements.....	21
8	Dropped Support and Deprecated Functionality.....	22

1 Summary

This document describes new features included in the QPR Suite 2025 release.

2 Support for QPR BusinessPortal / Web Services Improvements

This section describes improvements in QPR BusinessPortal in the QPR Suite 2025 release.

2.1 QPR BusinessPortal User Experience Improvements

This section describes User Experience improvements in QPR BusinessPortal.

2.1.1 Diagram Viewer Improvements (B-08121, D-14350, B-07868, D-14349)

The Diagram viewer zoom system has been totally rebuilt and is able to handle and zoom also with big diagrams. In addition, there are diagram item links that are clickable, such as child diagrams (subprocess) and connector ends (incoming/outgoing links). Diagram links now open either the Details view or the linked diagram.

2.2 QPR BusinessPortal Configurability

This section describes configurability improvements in QPR BusinessPortal.

2.2.1 Relations Browser - Configurable columns (B-07356)

Users can configure the columns displayed in the Relations Browser, including the types of elements and the relations between them.

2.2.2 Details of the Card (B-07881)

The system allows configuration of the set of fields, input/output connectors, and processes/steps list displayed on the QPR BusinessPortal card.

2.2.3 Support for Custom Attributes in Client Configuration (B-08635)

Any attribute, including custom attributes, can be used in client configuration settings stored in the clientconfig's MongoDB collection.

2.2.4 QPR BusinessPortal Information View for Non-card Elements (Activity Task etc.) (B-08623)

There's now a configurable information view for non-card elements like tasks and activities, accessible from the List/Table and Diagram views.

2.2.5 Support for Client Configuration and Localization (B-08543)

The internal technical structures which are needed for configuration and localization are now in place.

3 QPR ProcessDesigner / EnterpriseArchitect Windows Client

This section describes improvements in the QPR ProcessDesigner / EnterpriseArchitect Windows client in the QPR Suite 2025 release.

3.1 QPR ProcessDesigner / EnterpriseArchitect Modeling

This section describes modeling improvements in QPR ProcessDesigner and QPR EnterpriseArchitect 2025.

3.1.1 Possibility to Set the Default Child Diagram Type for Popup Menu Option (B-08119)

Using the Modeling Options, it's now possible to configure the default diagram type used for child diagrams.

3.1.2 Possibility to Show Note Element on Diagram (B-08300)

Users can now show a linked Note element on a diagram, even if it's not already shown, by selecting "Show Note on Diagram" from the popup menu.

3.1.3 When a Connector is Moved on an Element That Has Hidden Diagram Content Field the Connector's End Element No Longer Changes (D-14307)

When a connector is moved to a different place on an element that has a hidden diagram content field, the connector's end element no longer changes to be the diagram element.

3.1.4 Connectors No Longer Stay Behind the Group Element When Elements Are Grouped (D-14277)

When elements are grouped, connectors between the elements no longer stay behind the group in z-order.

3.1.5 Presentation View Improvements (D-14208)

The Presentation View and Print Preview now show the same diagram that the user can see in the client, reflecting the currently set effective View Settings.

3.1.6 Better Support for Changing Diagram View Setting (D-14194)

When View Settings hide some element types, the visible area of the diagram is now updated correctly to not show an empty diagram.

3.1.7 BPMN 2 Improvements (D-14149)

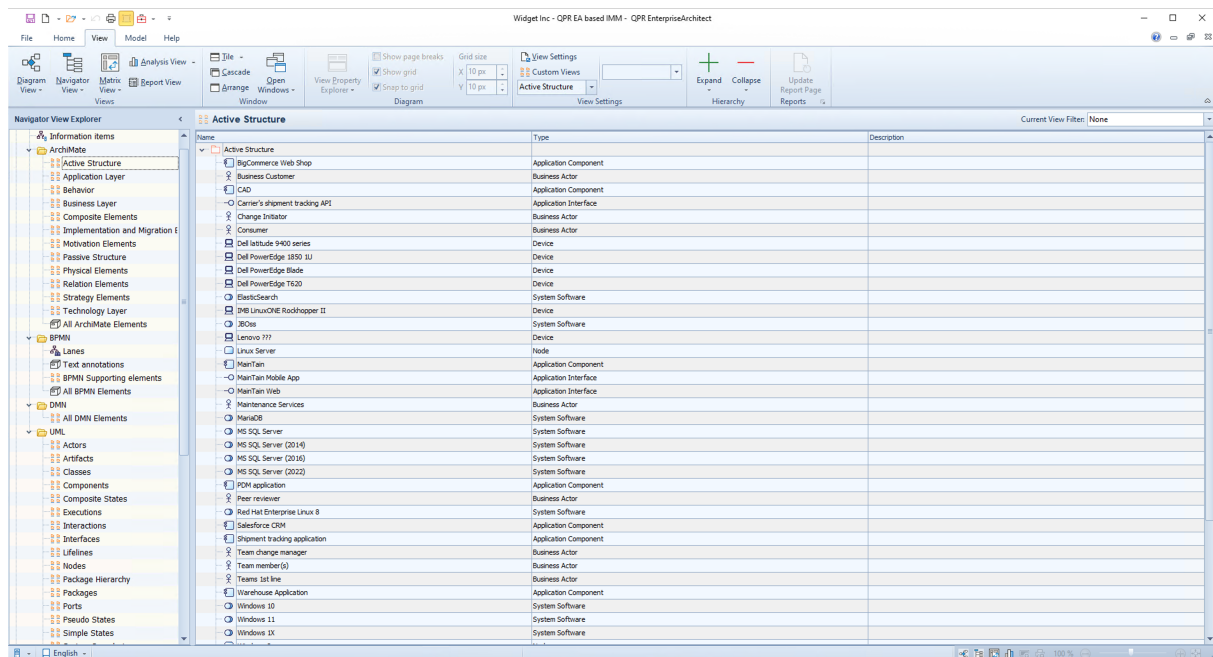
BPMN 2 templates have been simplified by deleting some unneeded custom attributes. Also, the new Call Activity element type supports diagram links. Updated BPMN 2 Export/Import scripts now improve the support to Pool and Lane.

3.1.8 ArchiMate 3.2 Support (B-08572)

QPR ProcessDesigner/EnterpriseArchitect ArchiMate is updated to version 3.2, including templates, demo models, and MEFF Export/Import scripts.

3.1.9 New QPR EA Based Integrated Meta Model 2025.1 Template (B-08572)

QPR Integrated Meta Model is released with EnterpriseArchitect 2025.1. Integrated Meta Model is a new template for EA modeling that combines ArchiMate 3.2, BPMN 2, UML and DMN modeling notations.



3.1.10 Owner Field Inconsistency Resolved (D-14145)

The inconsistencies that existed in the Owner field behavior in QPR ProcessDesigner / EnterpriseArchitect, particularly regarding user rights and updating information across different views, have been resolved.

3.1.11 QPR ProcessDesigner/EnterpriseArchitect Relation to Subprocess Elements Activates Diagram Link Functionality in Client (D-13990)

Fixed an issue, where a relation to subprocess incorrectly activated the diagram link functionality, which didn't not work in Portal.

3.1.12 Generic Element's Default Information Item Can Be Set (D-13846)

For generic elements, the default information item can now be set correctly.

3.1.13 QPR ProcessDesigner/EnterpriseArchitect Support Attribute Sets in Diagram View Setting Visibility (B-08636)

Attribute set's attributes are supported in diagram view settings, listing all attribute set attributes defined in element type's stencil for selection.

3.1.14 QPR ProcessDesigner/EnterpriseArchitect "Prevent Diagram Opening" Behavior for Diagram Elements (B-08627)

There's now a new behavior option to prevent users from accidentally opening diagram views of diagram elements hidden from the diagram hierarchy.

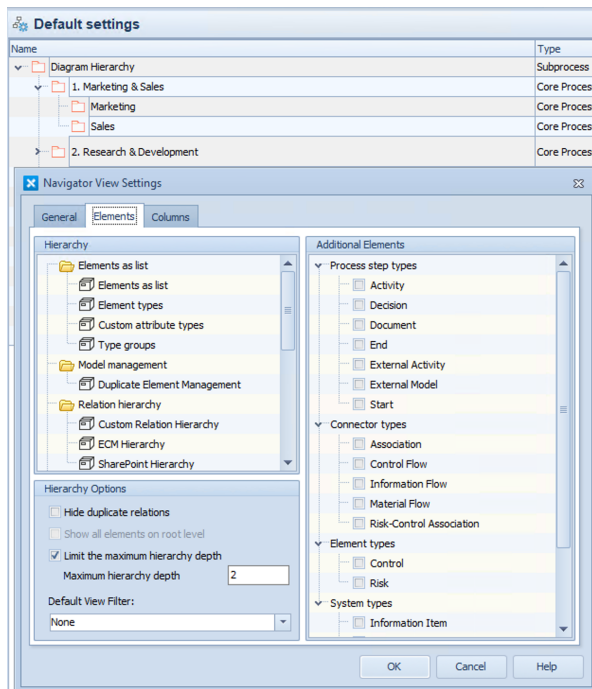
3.1.15 New Navigator View Supported Relation for Custom Relation Hierarchies (B-08626)

Added support for a new relation "Child Organization items" for diagram type elements in custom relation hierarchies in the Navigator view.

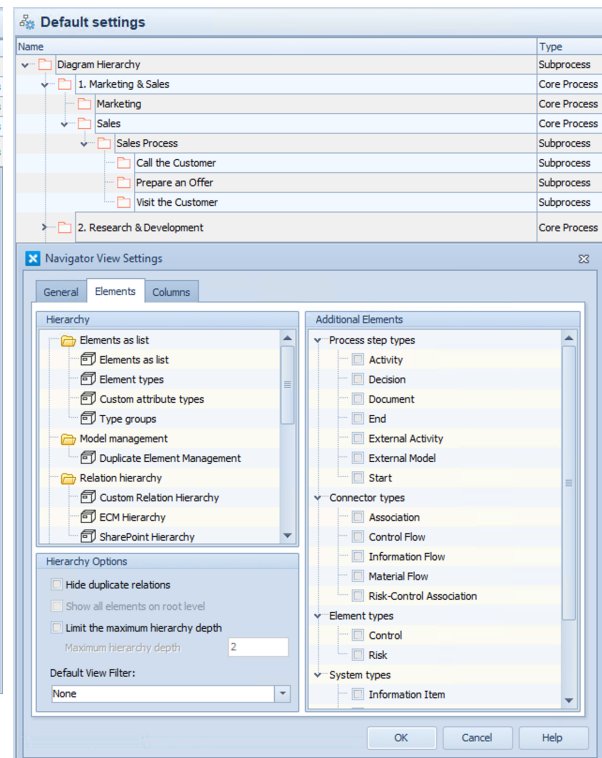
3.1.16 Use Filter to Create Sample for Navigator View (B-08518)

Implemented sample filtering for Navigator view, creating a filtered set of elements used for creating the navigator hierarchy, along with options for limiting hierarchy levels and showing all elements on the root level.

The new "Limit the maximum hierarchy depth" and "Maximum hierarchy depth" settings limit the depth of the hierarchy to the defined limit. When viewing the hierarchy, the generation of any hierarchy branch stops at the level of maximum hierarchy depth, meaning that no child items are any longer shown for items that are at that level. Filtering is done before checking for the maximum depth. For example, a branch in the full hierarchy would be A -> B -> C -> D -> E. If the maximum depth is 3, the displayed branch would be A -> B -> C. If filtering is applied and element B would be filtered out, the displayed hierarchy branch would be A -> C -> D. These options are available for all hierarchy types (although useless for "Elements as list" hierarchies).



Navigator View with limited maximum hierarchy depth



Navigator View with no limit to the maximum hierarchy depth

3.1.17 Show Relations with From/To Element Type (B-08508)

A column was added in the QPR ProcessDesigner/EnterpriseArchitect element properties to show relations with the "from/to" element type. Also, a new "Relations" tab/section was added in the QPR Portal to display the same information.

3.1.18 Diagram Versioning Improvement - Last Updated Timestamp (B-08466)

Add "Last modified time" and "Last modified by" fields on diagram elements, updated automatically when changes occur in the diagram, and make these fields available in various views and APIs.

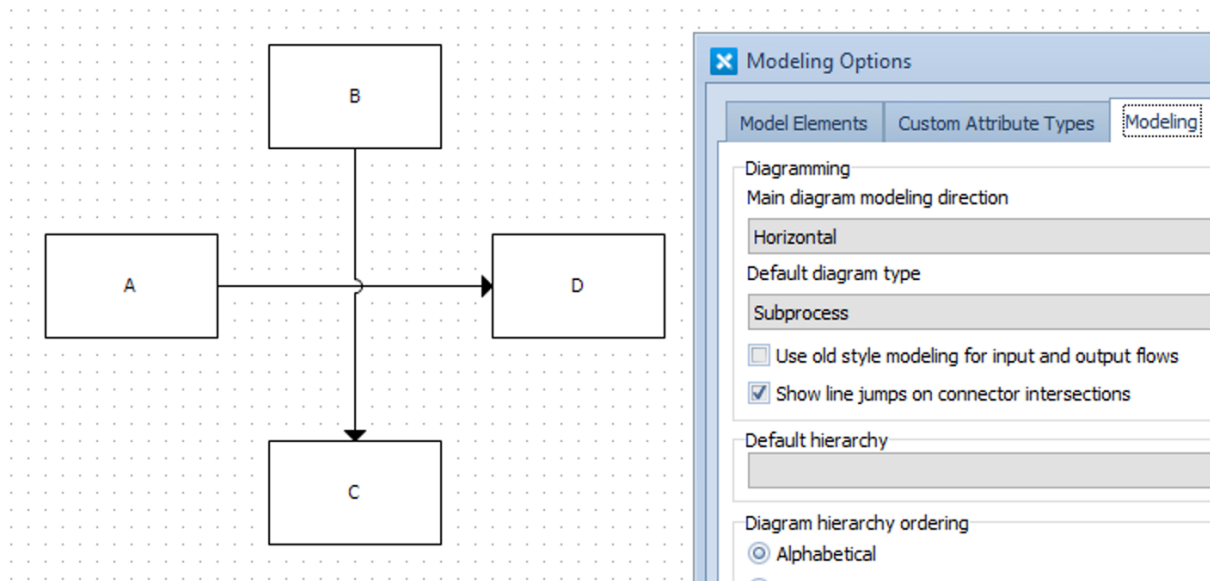
The fields are updated automatically when something changes in the diagram. The following changes are handled:

- Diagram element properties change (includes system attributes, custom attributes and relations to other elements).

- Changes to the diagram element instances (creating a new instance, removing an instance, modifying instance relations, like attached elements or connectors) will not cause updating the last modified fields.
- There is a visible change on a diagram level. Elements/instances/connectors are added on the diagram level.
- Elements/instances/connectors are removed from the diagram level.
- Graphical properties of an element are changed (size, position, connector route, color, etc.).
- Element property that exists on the element stencil is modified. Note that it is enough that the property exists on the stencil, it does not have to be visible on the diagram when the property is changed.
 - For example, element has status custom attribute and it has been added on the element stencil. The status attribute is not visible on current view settings. User changes the status property -> diagram's last modified fields are updated.
 - If the property that is on the stencil is a relation attribute, and it displays another attribute from the relation target element, the diagram's last modified fields are not updated when the target element's custom attribute value changes. The last modified fields are updated only if the relation attribute value changes (relation is changed to point to a different element).
 - If a last modified field is visible on the element stencil, it will not cause the parent diagram's last modified fields to be updated. For example, there are subprocesses in the model, with hierarchy A -> B -> C. Last modified time field is visible on the subprocess element's stencil. There is an activity X on diagram level C. User moves the activity X on the diagram -> diagram C's last modified fields are updated. Since the last modified time field is visible on diagram element C's stencil, it will cause a visible change on diagram level B. But since the last modified fields are an exception, the change will not cause diagram B's last modified fields to be updated.
- Changes to element types (element type graphical properties) do not cause the last modified fields to be updated even if they result in visible changes on diagram levels (for example when the background color is changed on the element type)

3.1.19 Draw a Bridge / Jump Where Connectors Cross (B-08431)

A New option to automatically draw a bridge/jump where connectors cross on a diagram.

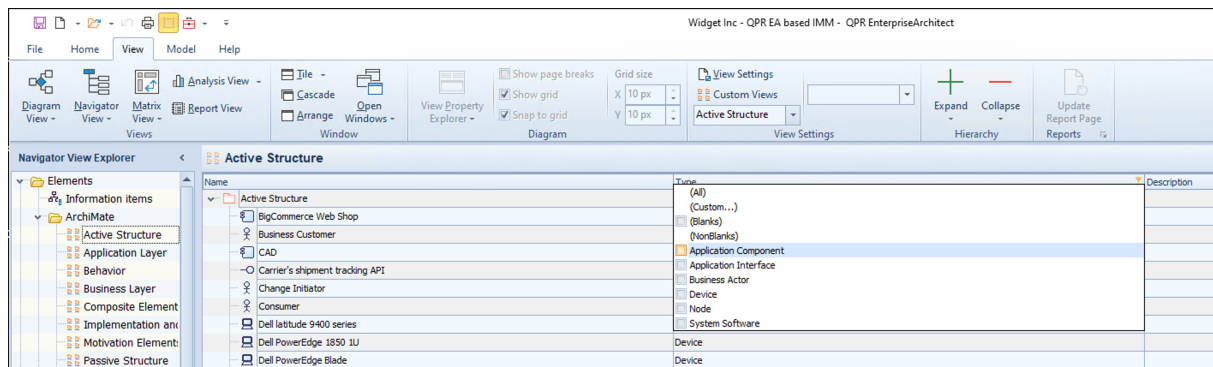


3.1.20 New Navigator View Filters Information Item Type (B-08417)

"Information item type" was added to the QPR ProcessDesigner/EnterpriseArchitect Navigator view filters.

3.1.21 Navigator View Excel Type Column Filtering (B-08290)

Implemented Excel-type column filtering in the Navigator view, allowing users to filter based on column values using a selection list.



3.2 QPR ProcessDesigner / EnterpriseArchitect API

The QPR ProcessDesigner / EnterpriseArchitect API received the following improvements:

- Fixed various issues that occurred when creating Relation Connectors (REC) via API, including routing resets, incorrect connector positioning, and navigator view update problems. (D-14296)
- GetProperty and GetProperties methods work as expected with cardinality N sets and enumerated values, no longer leading to errors and incomplete data retrieval. (D-14292)
- Added a new parameter "CheckInstances" to the ImportModel function to control whether instances are created instead of new elements when importing models. (B-08482)
- For ImportModel, added a new parameter for conditional import that defines an attribute and a value that needs to be found as true from the source diagram element. (B-08459)
- A new element property "Hidden" that can be used to hide instances on diagram. Also a new parameter when creating diagram elements with option to hide the instances. (B-08347)
- Added a new parameter for importing diagram's type group in ImportModel by matching with the type groups' symbols. (B-08154)
- Added a new attribute 'instancesingroup' to the Web Services API to get member instances of a group. (B-07949)

3.3 QPR ProcessDesigner / EnterpriseArchitect User Experience

This section describes User Experience improvements in QPR ProcessDesigner/EnterpriseArchitect.

3.3.1 Web Style Copy-Paste Information Item Direct Links (D-11305)

It's now possible to copy-paste web style information item direct link settings.

3.3.2 Horizontal Scrollbar for Left Side Hierarchy in Selection Dialogs (B-08503)

A horizontal scrollbar was added for the left-side hierarchy in selection dialogs when the hierarchy content width exceeds the available area.

3.3.3 Presentation View to Show Note / Information Item Dialog (B-08475)

In the Presentation View, it's now possible to right-click over the note or information item icon to show the note properties dialog or to follow the information item link.

3.3.4 New Grab and Move Tool (B-08473)

There's now a new Grab and Move tool that allows users to click and drag on an empty part of the flowchart canvas to pan the entire view.

3.3.5 Support Horizontal Scrolling with Touchpad (B-08378)

Added horizontal scrolling support using a touchpad (two-finger left-right) in addition to the existing Shift key + mouse wheel functionality.

3.3.6 Client Diagram View No Longer Jumps to Root Level After Saving (D-14152)

Fixed the issue where when multiple users were editing the same model, the selected diagram view sometimes jumped to the root level after saving, particularly when users had all model rights from groups.

3.3.7 New default Zoom Sizes for Web Styles (B-05898)

The default global and model-specific zoom sizes in Web Styles now have the selection of "Fit to window" and "Page width" options.

3.4 QPR ProcessDesigner / EnterpriseArchitect Reliability

- Fixed an issue where, for basic modeler users, a certain modeling pattern caused an error when clicking on elements from the base model. (D-14392)
- Fixed an issue where deleting a type group from a base model caused child models to become inaccessible, resulting in an error when opened. (D-14169)
- The server model size can now be over 2GB. (D-14300)
- Temporary file models saved by users without a QPR User Management System password can now be opened again. (D-13718)

4 QPR Portal Improvements

This section describes improvements in QPR Portal in the QPR Suite 2025 release.

4.1 QPR Portal Facelift (B-08586)

QPR Portal received a fresh look and feel. There has been change of icons and colors.

4.2 Scorecards/Actions Views in Booklets Can Now Be Scrolled Vertically (D-14289)

Scorecards/actions briefing booklet views can now be scrolled vertically, making all the content accessible when viewed in a briefing booklet.

4.3 Do Not Allow Setting an Empty Password in Portal (B-08592)

It's no longer possible to accidentally (e.g. due to browser auto-fill) set an empty password in the Portal My Profile section.

4.4 QPR Portal Navigator View to Show Column Values for Relation Element's From and To (D-14368)

Relation Element "from" and "to" values are now supported in Processes Portal Navigator/Analysis views.

4.5 QPR Portal Filtering by Organization Item (D-14193)

Both Navigator view and Analysis view can now be filtered by Organization item and Information item.

4.6 Portal Action Last Modified Now Updated When Switching Attachment (D-13941)

When attaching a file to a Portal action, the last modified date of the action is now updated.

4.7 Analysis View to Show Attribute Set's Cardinality N Relation Attributes in the Order They Have Been Created in Client (B-08525)

Cardinality N relation attributes in the Analysis view are now shown in the same order as they were created in the client. This customization code exists in the `processguidecustomattribute.tpl` template as commented.

4.8 Hide the "No Access" Text From Analysis view (B-08524)

The "No access" message is now hidden from the Analysis and Actions views, similar to how it's hidden in the Portal flowchart view.

4.9 Portal Support For Published Client Navigator View Customized Column Names (B-08500)

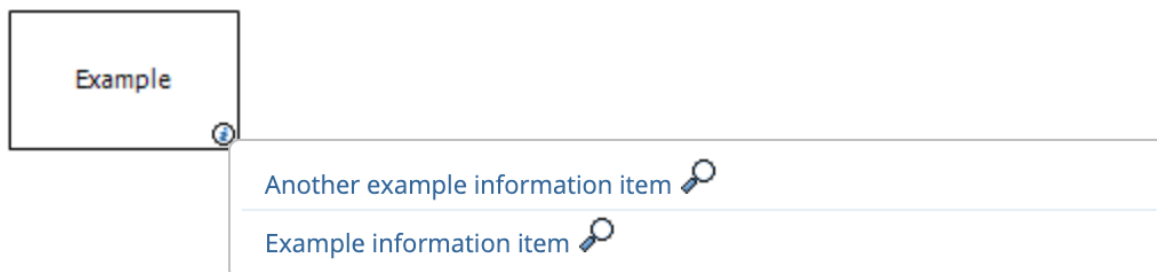
The QPR Portal navigator hierarchies now show the same column names as the Windows client navigator views.

4.10 Copy Link Button to Copy Link Directly to Clipboard (B-08474)

The "Copy link" button in QPR Portal now automatically copies the URL link to the clipboard.

4.11 Popup Selection List for Information Items, External Models etc. (B-08436)

There's now a popup selection list for information items, external models, and linked diagrams in the QPR Portal diagram view when the icon is clicked.



4.12 Metrics Link Traffic Lights Support for BPMN Models (D-11509)

The Metrics link traffic lights are now supported for all BPMN elements in QPR Portal. In addition, support for elements inside Pool and expanded sub-process element was added.

4.13 Default Value Now Works for Users Custom Attribute Type (D-14075)

When a default value is defined for a "users" type custom attribute, the corresponding user selection field is now filled when starting to create a new action of that type in Portal.

5 QPR Web Services Server

This section describes improvements in QPR Web Services Server in the QPR Suite 2025 release.

5.1 Resources Now Work Correctly for Organization Items (D-14375)

Fixed an issue where the web service did not correctly return resources for organization item types. This issue affected queries that involve related attributes and functions as attributes.

5.2 Web Services Server No Longer Occasionally Crashes When Logging Off Expired Session (D-13224)

Fixed an issue where the WAS Core occasionally crashed when attempting to log off expired user sessions.

5.3 Web Services Server No Longer Freezes at Startup if QPR_Servers.ini Has Special Characters (D-13935)

Fixed an issue where the Web Services Server failed to start if special characters (ä, ö, å, ü) were present in the configuration file.

5.4 QPR Foundation Server No Longer Crashes When Trying to Create/Modify User/Group with Long Attribute Values (D-13414)

Fixed an issue where the Foundation Server crashed when attempting to create or modify users with excessively long attribute values (login name, full name, email, etc.).

5.5 Web Services Attribute Userswithaccess Performance Improvement (D-13298)

Fixed an issue where the userswithaccess attribute caused long response times in queries. Optimizations were made to improve performance.

5.6 Web Services No Longer Crashes When Sorting Query Result with Value (D-13953)

Fixed an issue where sorting query results by attribute value caused an access violation, leading to server crash.

5.7 Web Services Support for Connector Target Elements (B-08605)

The Web Service now supports a new function/attribute to directly get the connector/relation target element, facilitating QPR BusinessPortal Relations Browser configurations.

5.8 Attribute to Web Service API for Getting EA Object Behaviors (B-07911)

Added an attribute to Web Service API to check if an EA object has specific behaviors, such as "group element" or "diagram".

5.9 Createobject Now Allows Creating Metrics Elements with Names Longer Than 100 Characters (D-13947)

Fixed an issue where the web service did not allow creating Metrics elements with names longer than 100 characters, even though up to 300 characters was supported.

5.10 UserId and DirectObjectRightsOnly Parameters to Web Service Accesslevel Attribute (B-07852)

A new optional parameter "userid" was added to the accesslevel attribute in web service for querying the access level for other than current users/groups. Another parameter "directobjectrightsonly" was added for returning only direct object rights.

5.11 MatchEndingOrEndedPeriod Parameter to Web Service API (B-08030)

Support for new parameter MatchEndingOrEndedPeriod was added to web service API for all measure value - related attributes. This can be used to prevent ending up with a future period when matching periods between different period levels.

5.12 Calculation Can Now Be Triggered When Formula Is Changed From Web Service API (D-12950)

Fixed an issue where changing a formula via the web service API did not trigger a recalculation, requiring a full-model recalculation instead. A new optional parameter `recalculate=0/1` was added to address this.

5.13 Web Service API Support for Period References Lastforseries and Firstforseries (B-07686)

Added support for new period selections "lastforseries" and "firstforseries" in web service API for measure values.

6 QPR Metrics

This section describes improvements in the QPR Metrics Windows client in the QPR Suite 2025 release.

6.1 QPR Metrics Custom Attributes (B-08364)

Implemented custom attributes for all model objects in Metrics, allowing custom fields to be set and read via Web Service API and COM API, with JSONPath support.

In addition, calculation formulas support a new function CUSTOMATTRIBUTE with parameters for JSONPath and inheritfrom. For example: CUSTOMATTRIBUTE("someattribute","parenthierarchy"). The resulting value can be stored in a text series or used as part of a larger formula to derive other calculation products as usual.

6.2 Model Merge No Longer Creates Default Formulas Containing One Space Character (D-14255)

Fixed an issue where, after merging two QPR Metrics models, the value settings' series in the resulting model had a space character as the default formula, where the original models had no default formula.

6.3 Dashboard Symbol Layout Period Settings Are No Longer Broken After Model Merge (D-14164)

Fixed an issue where the dashboard symbol layout period settings were broken after a model merge, requiring manual intervention to correct.

6.4 Selecting an Empty Value Setting for an Element No Longer Crashes Metrics Server (D-14199)

Fixed an issue where selecting an empty value setting for an element crashed the QPR Metrics server.

6.5 Valid Formulas Are No Longer Set as Invalid (D-12918)

Fixed an issue where, in some cases, calculation for a valid formulas was prevented when the formula referred to other series in the same value settings.

6.6 Metrics Server No Longer Crashes When Setting Certain Attributes (D-12753)

Fixed an issue of the Metrics server crashing when setting both value settings and series measurement units with one Web Service SetAttributes call, or when setting the series measurement unit to an invalid value.

6.7 Explicit None Rights Given via a Group Can Now Override Other Object rights (D-12718)

Explicit "none" rights given via a group did not override other object rights. There is now a server-side Metrics ini-option ExplicitNoneRightsOverrideHigherGroupRights to control this behavior.

6.8 Metrics Element Description Maximum Size Increased (B-08479)

The maximum size of the Metrics element Description property was increased from 2000 to 30000 characters.

6.9 Next Period's Value Is No Longer Put Into Current Period When Next Period Doesn't Exist for Measure (D-14111)

When inputting values for a measure in QPR Portal analysis or navigator views, if the Next or Previous period was selected but didn't exist, the value was placed into the Current period instead. This is now prevented.

6.10 API and SQL Import Now Accept Measure Values With Unit's Decimal Symbol (D-14098)

Fixed an issue where API scripts and SQL imports only accepted decimal values using the Windows user account's decimal symbol, rather than the measurement unit's defined symbol.

6.11 QPR Metrics API

The QPR Metrics API received the following improvements:

- Fixed an issue where, when calling SCModel.GetGraph using the view name, the same image was exported regardless of the scorecard ID or graph type changes. (D-14362)

7 Other Improvements

- The client applications are now 64-bit and installed under Program Files instead of Program Files (x86). (B-05913)
- The DemoDB language codes have been changed to ISO 639: English=EN, Finnish=FI, Swedish=SV. (B-08571)
- The IP address of the connection is now included in the MetricsServerAudit.txt and BizArchServerAudit.txt server audit logs. (B-08608)
- Fixed an issue where, due to an encoding issue, the user login failed after a server restart if the password contained a specific rare combination of characters. (D-14173)

8 Dropped Support and Deprecated Functionality

Support for the following technologies is dropped in QPR 2025 release:

- The QPR Portal Workflow is deprecated. (B-08593)
- Removed references to deprecated Oracle and SharePoint integration kits from the documentation. (D-14114)
- Removed QPR Search Central MS SharePoint integration and related information from support material. (B-08457)
- Removed Silverlight option from Configuration Manager. (B-05646)